

# SAM / HeliSAM Comparison, Nth Qld

Data courtesy of Ivanhoe Cloncurry Mines



## Survey Specifications

Objective: To compare the acquisition speed and data quality of ground acquired and Helicopter acquired SAM data.

Date: December 2008.  
Location: North Qld.

Transmitter: Zonge GGT-10  
Current: 10 Amps  
Dipole: 7.2 km N-S

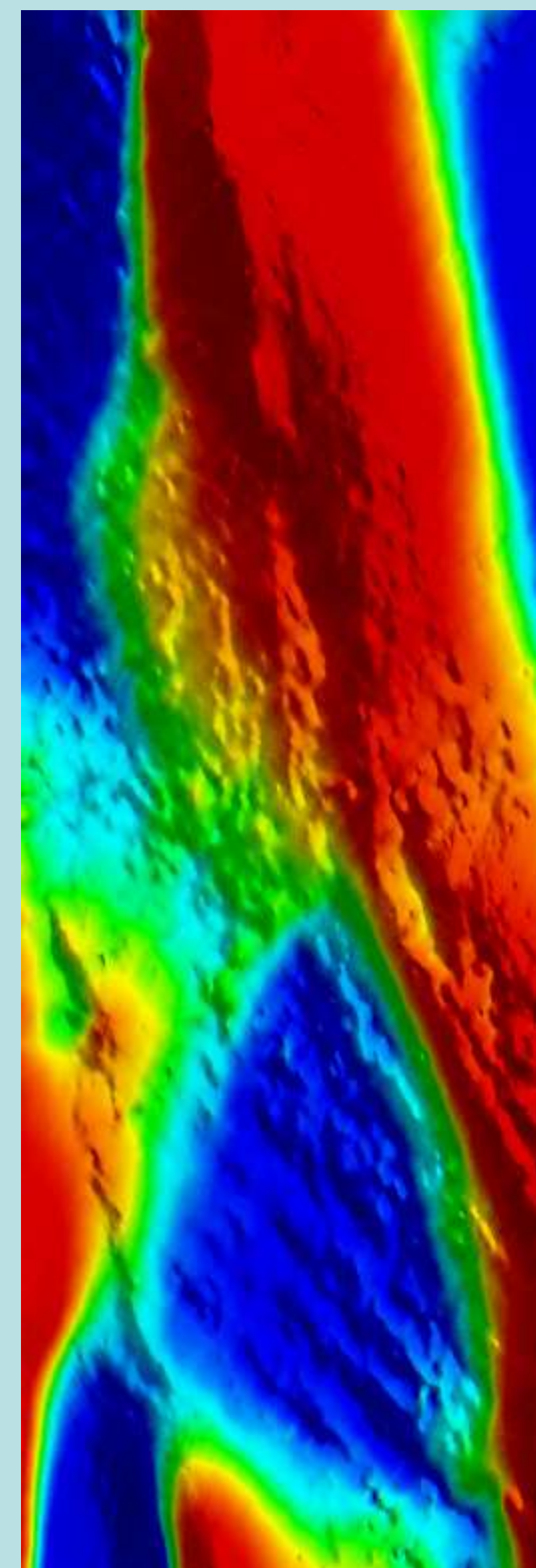
### Ground Acquisition

Platform: Hand carried 2 man crew  
Area: 5.5 km x 1.8 km  
Line Spacing: 50m  
Line Direction: E-W  
Total Distance: 198 km  
Survey Time: 11 crew days  
Production Rate: 18 km per crew day

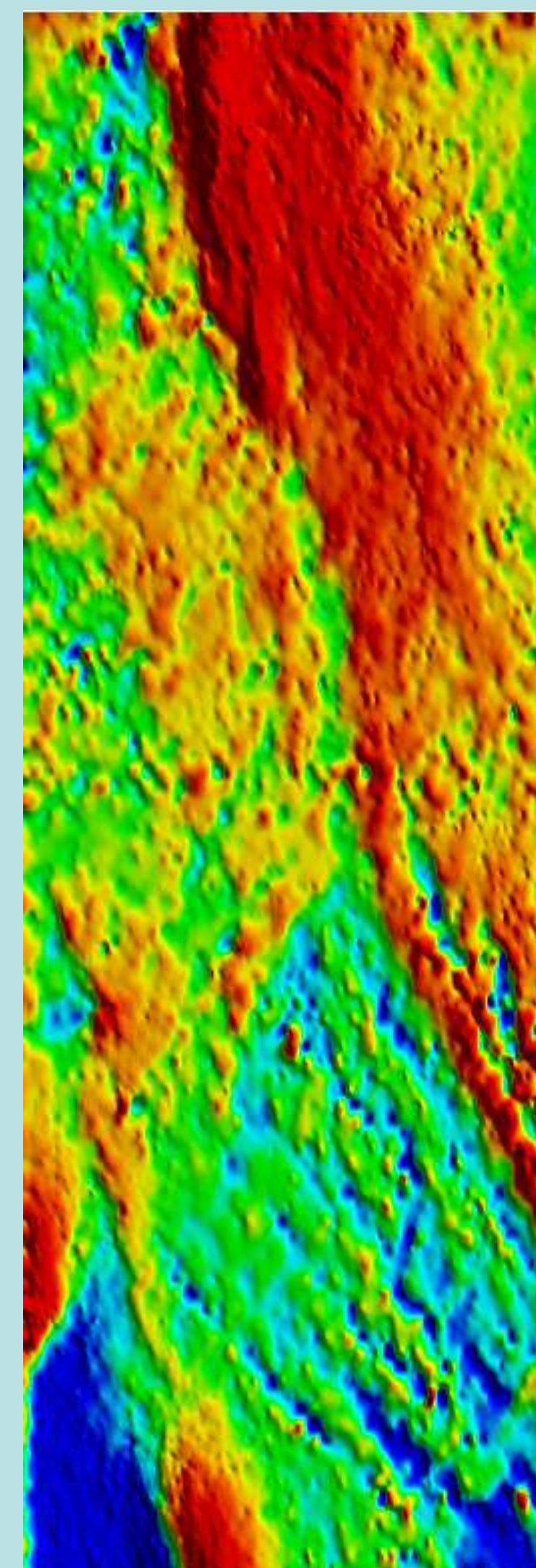
### Airborne Acquisition

Platform: Robinson R-22 towed bird  
Area: 5.5 km x 3.1 km  
Line Spacing: 40m  
Line Direction: E-W  
Total Distance: 426 km  
Survey Time: 8 hours  
Production Rate: 54 km / hr

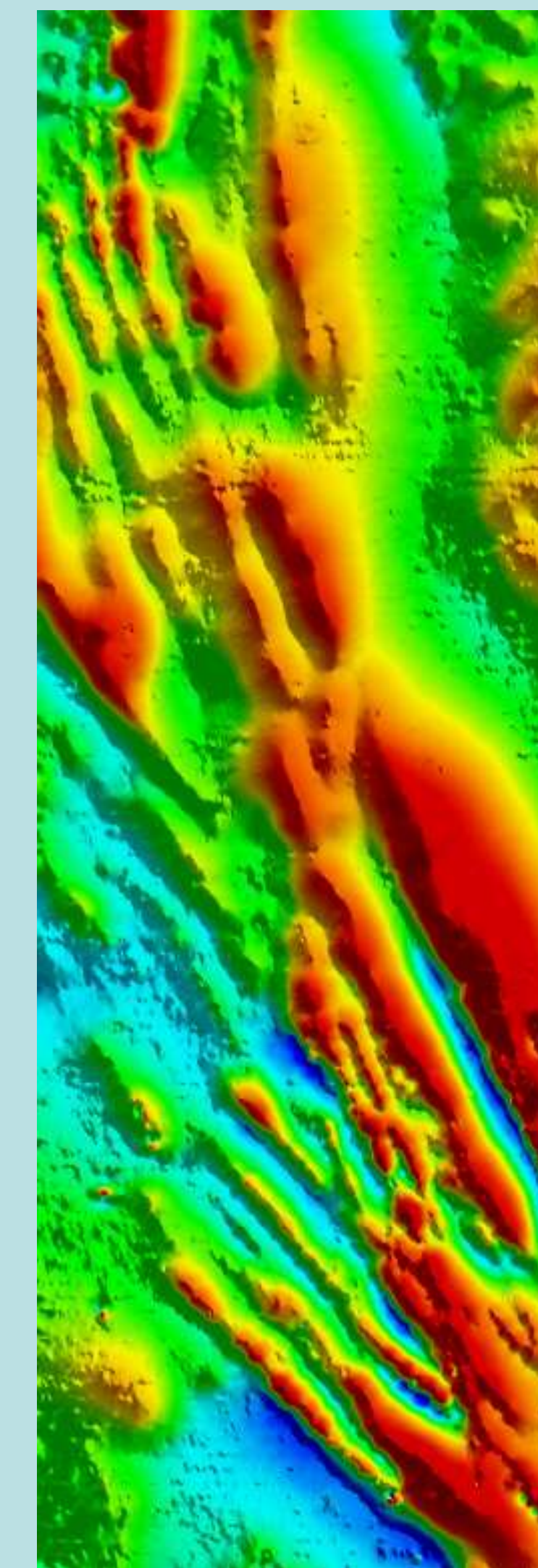
## Ground Acquired Data



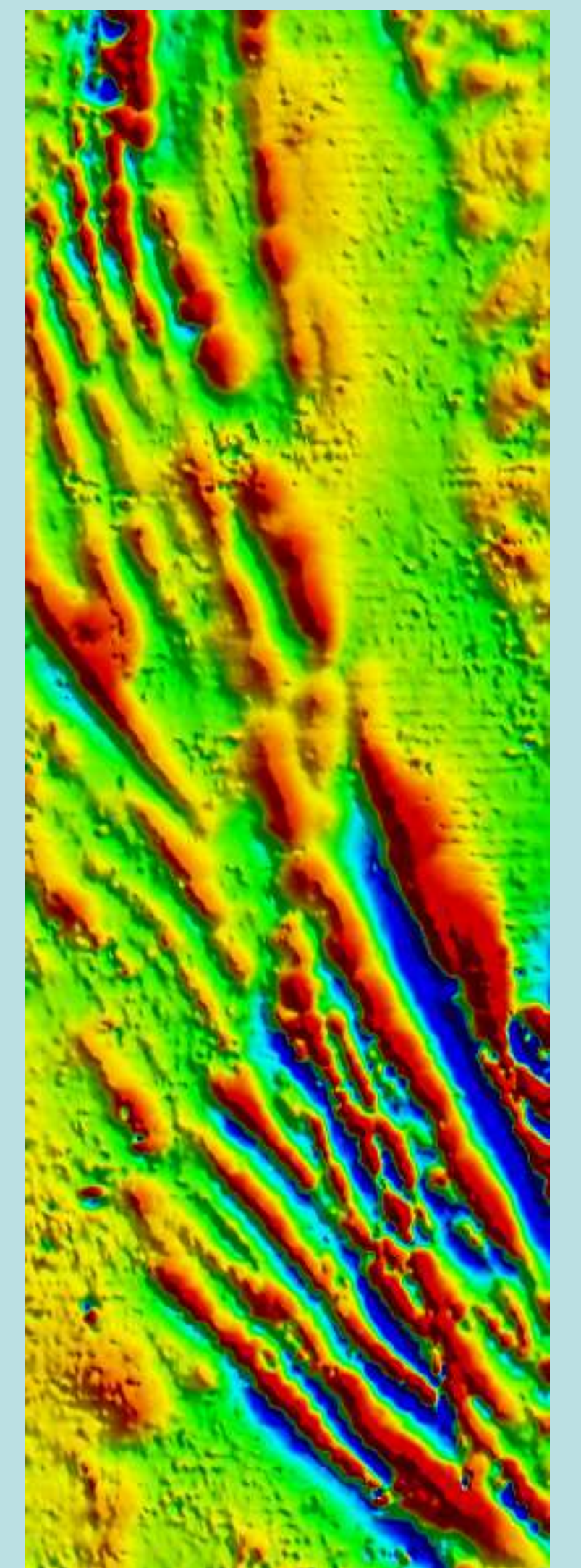
EQMMR



EQMMR\_1VD

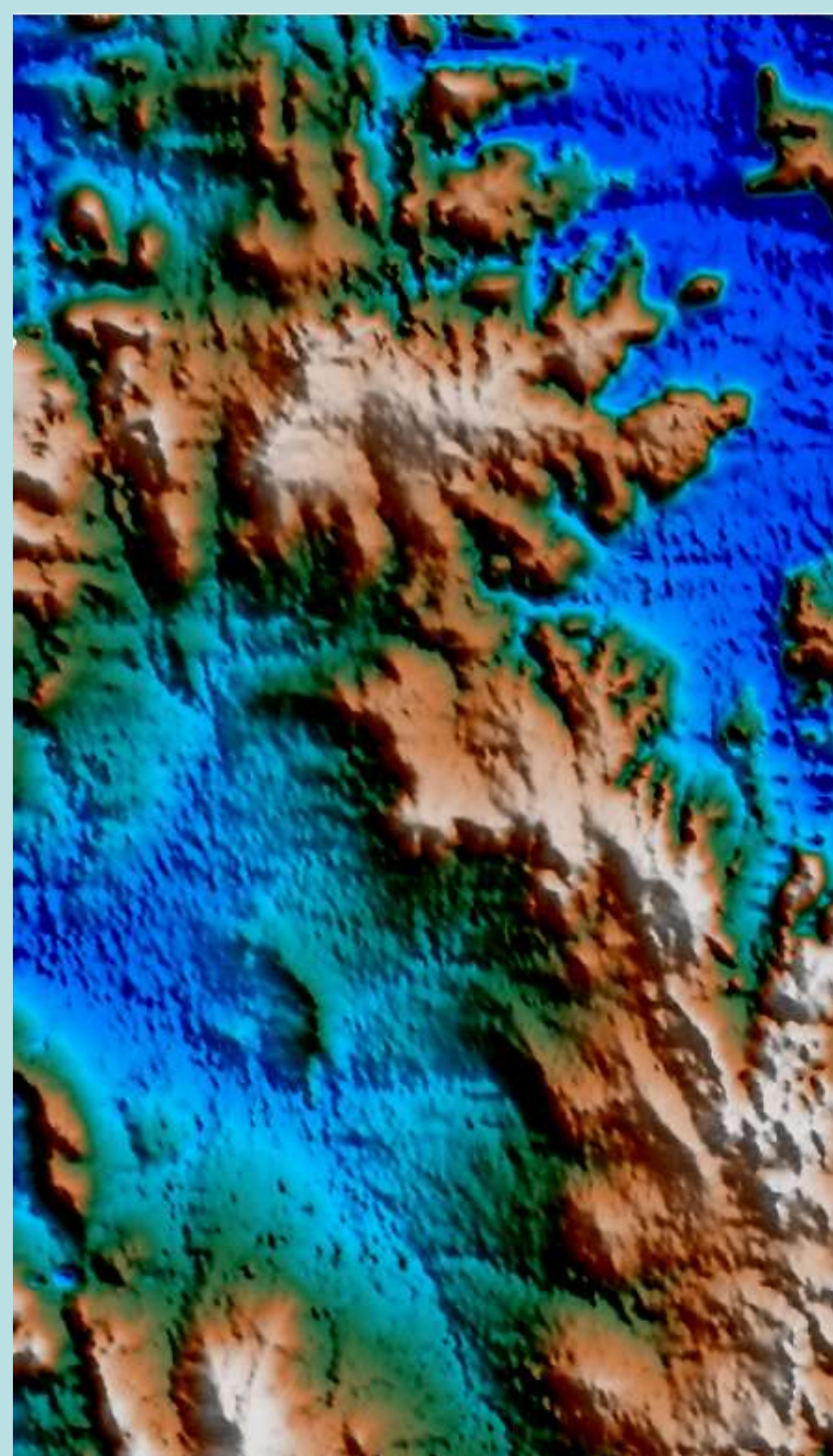


TMI

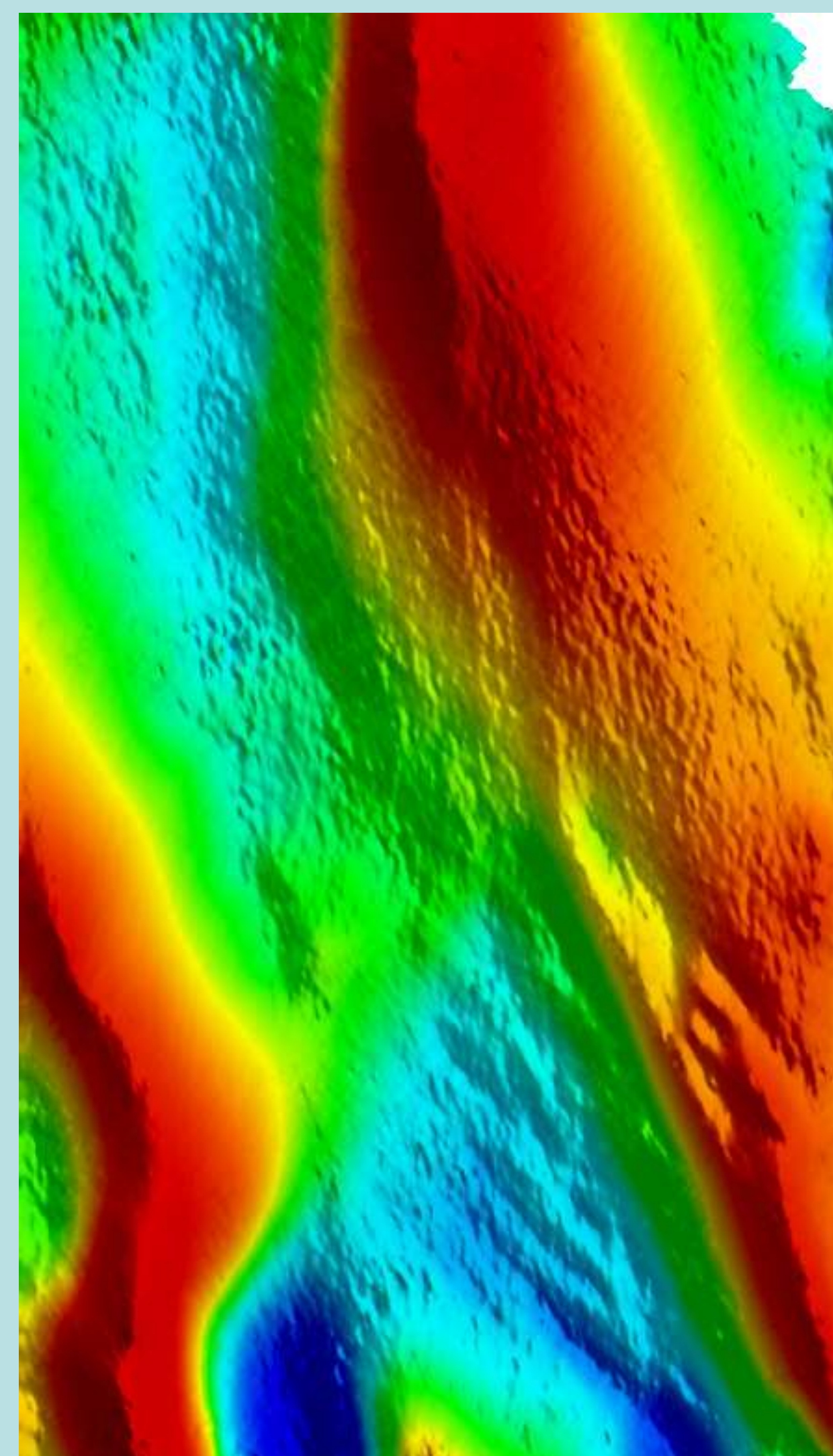


TMI\_1VD

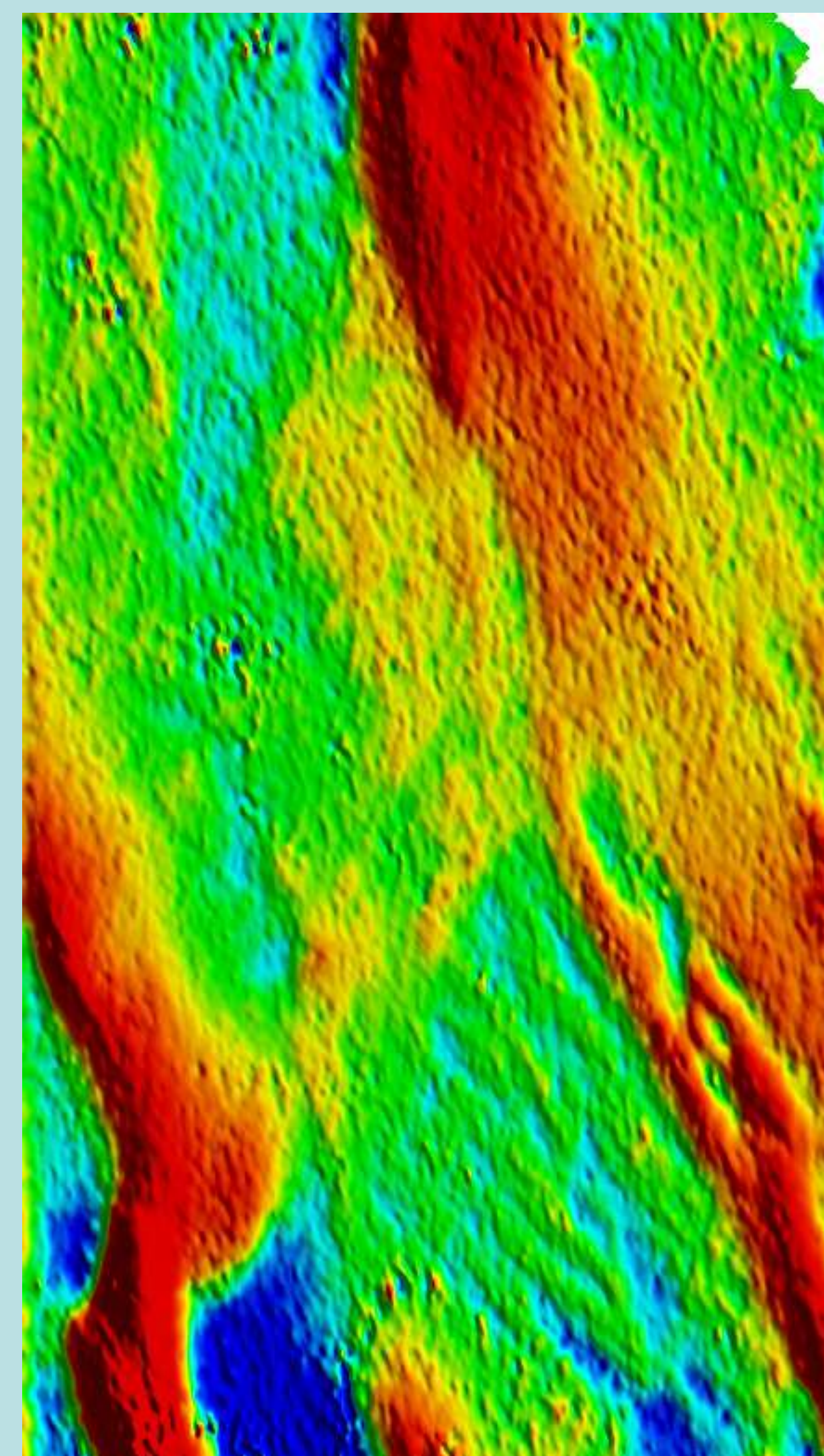
## Helicopter Acquired Data



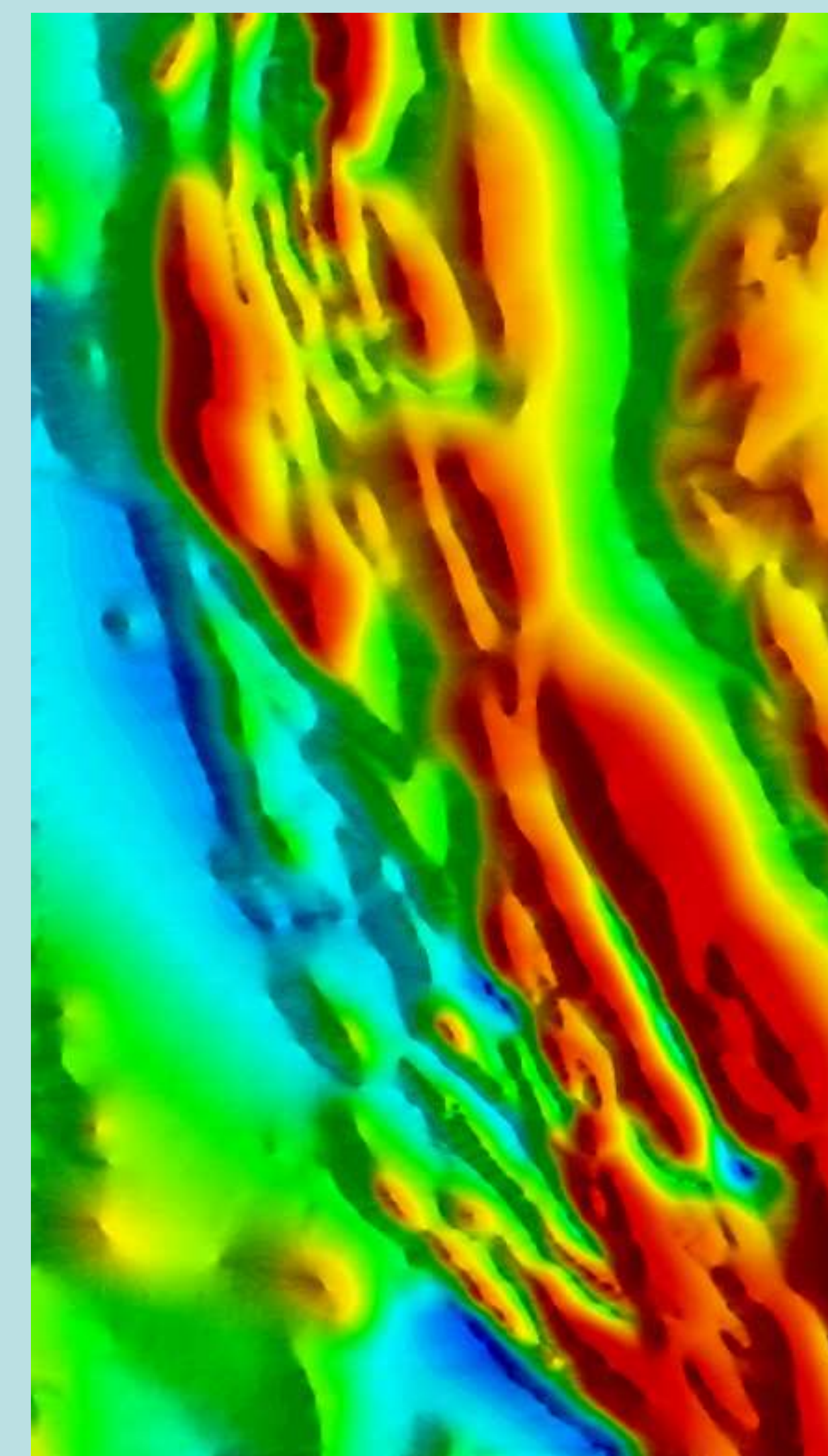
DTM



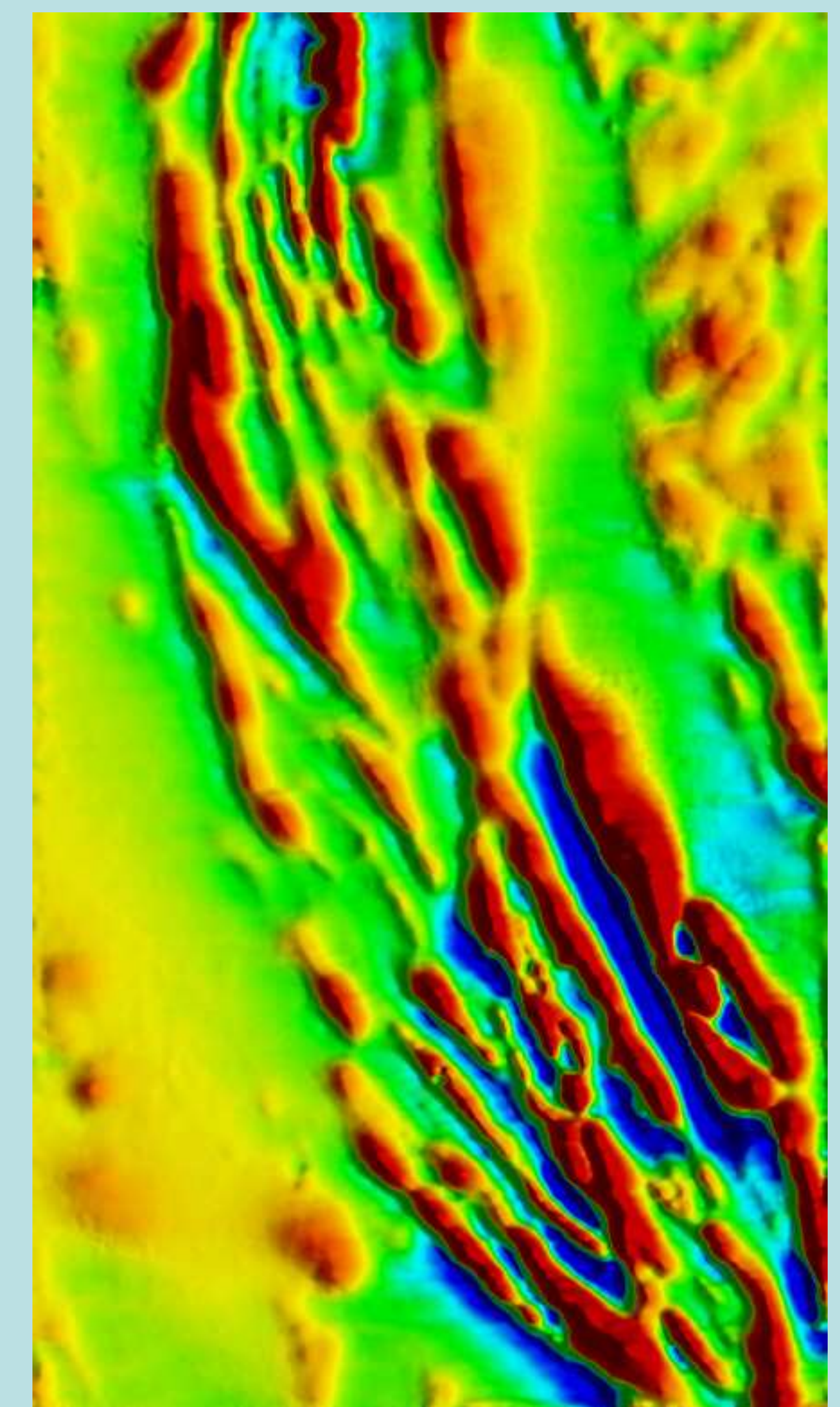
EQMMR



EQMMR\_1VD



TMI



TMI\_1VD